

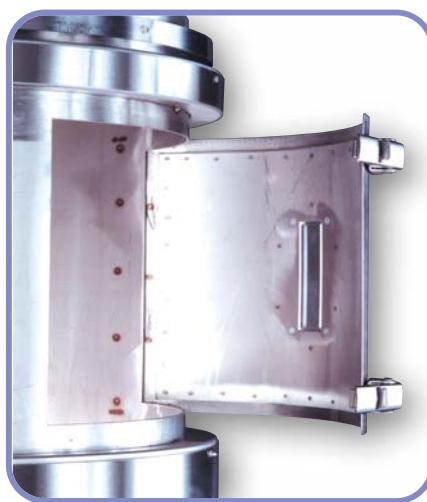
RH Series

Uniform drying coupled with easy accessibility for cleaning are key to proper hopper design.

- Standard sizes range from 5 to 2000 lbs (2 to 907 kg); based on 35 lbs/ft³*
- Unique diffuser basket dries resin down to the slide gate and allows for drying less than full hoppers
- Full length sight glass is standard on Models RH60 and larger



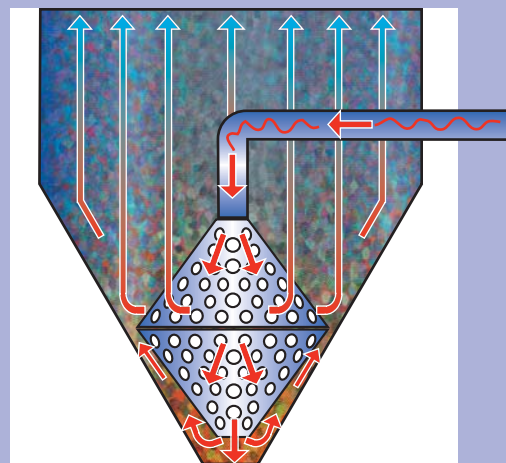
Diffuser basket is constructed of spun stainless steel with a slip coupling for easy removal



Laser-cut access doors provide a smooth, tight fit and eliminates troublesome gaskets

RH features

- Exclusive basket design assures dried material down to the slide gate – no slugs of undried material



- No tools required for hopper cover
- Internal ring on hopper cover prevents damage to hopper loaders
- Easy-close slide gate on RH400 thru RH2000 hoppers
- Insulated side walls eliminate heat loss and conserve energy

Dri-Air Hopper Model	CAPACITY		DIMENSIONS							
			(A)		(B)		(C)			
	lbs	kg	in	cm	in	cm	in	cm		
RH5	5	2	8	20	6	15	12	31		
RH15	15	7	10	25	9	23	18	41		
RH30	30	14	14	36	16	41	28	711		
RH60	60	27	14	36	28	71	40	102		
RH100	100	45	18	46	25	64	37	94		
RH150	150	68	18	46	38	97	50	127		
RH200	200	91	23	58	30	76	47	119		
RH300	300	136	23	58	44	112	61	155		
RH400	400	181	27	69	40	102	60	152		
RH600	600	272	27	69	60	152	80	203		
RH1000	1000	453	36	91	58.5	149	84.5	215		
RH1500	1500	680	39	99	70.5	179	97	246		
RH2000	2000	907	39	99	94.5	240	121	307		

Note: RH5, RH15, and RH30 do not have access doors. *Larger hoppers available, consult factory.



Adjustable fill sensor option ties into hopper loader to accommodate varying process rates for maximum flexibility

DRI-AIR
Industries, Inc.

www.dri-air.com

Call us at **860.627.5110**