

FlexTouch FTS Central Conveying Controls

FTS Fixed I/O (Siemens) Series: For up to 34 Receivers and 3 Pumps

The FlexTouch FTS Control Series provides full featured control in an economical fixed I/O package.

The FlexTouch FTS Series is a PLC based touch screen central loading control, featuring intuitive operation in a compact, economical package. All receivers, pumps and purge valves connect to a single enclosure via discrete wiring.



FlexTouch FTS Touch Control Available in 4" or 7" Screen Widths

Central PLC-Based Control

Includes touch screen control of loaders, pumps and purge valves.

Intuitive Operation

Simplified graphics require no special user training.

Two Touch Screens Available

Choose a diagonally-measured 4" or 7" high resolution color touch screen comfort panel with vivid icons that show system functions.

Proportioning Standard

Proportioning control is included at no additional cost. (See "Note" on next page).

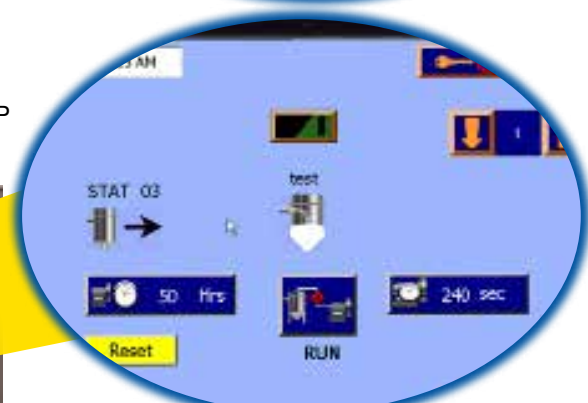
Ethernet Capability

All color touch screen controls can be equipped with Ethernet capability to readily network to a PC(s) anywhere.

STATION SETUP 4" SCREEN



VACUUM PUMP SETUP 7" SCREEN



Plus:

- 24 VDC inputs & outputs
- 115/1/50-60 Volt standard (230 VAC optional)
- Audible and visual alarms on the control face
- 2-Year warranty



 PROUDLY MADE IN THE USA

Specifications

Model	Touch Screen Control	Number of Pumps	Number of Receivers	Number of Purge Valves	Control Box Dimensions
FTS-105-0-4C	4" Color	1	up to 5	0	18"x18"x8"
FTS-210-6-4C	4" Color	2	up to 10	6	18"x18"x8"
FTS-210-6-7C	7" Color				
FTS-320-8-4C	4" Color	3	up to 20	8	30"x24"x8"
FTS-320-8-7C	7" Color				
FTS-334-10-4C	4" Color	3	up to 34	10	30"x24"x8"
FTS-334-10-7C	7" Color				

Optional:

(Show as separate line items on order. See Price List # 342)

Blowback outputs for receivers:

(Must be factory installed)

For up to 5, 10, 16 or 32 receivers

115V I/O for existing systems:

(Must be factory installed)

For all models.

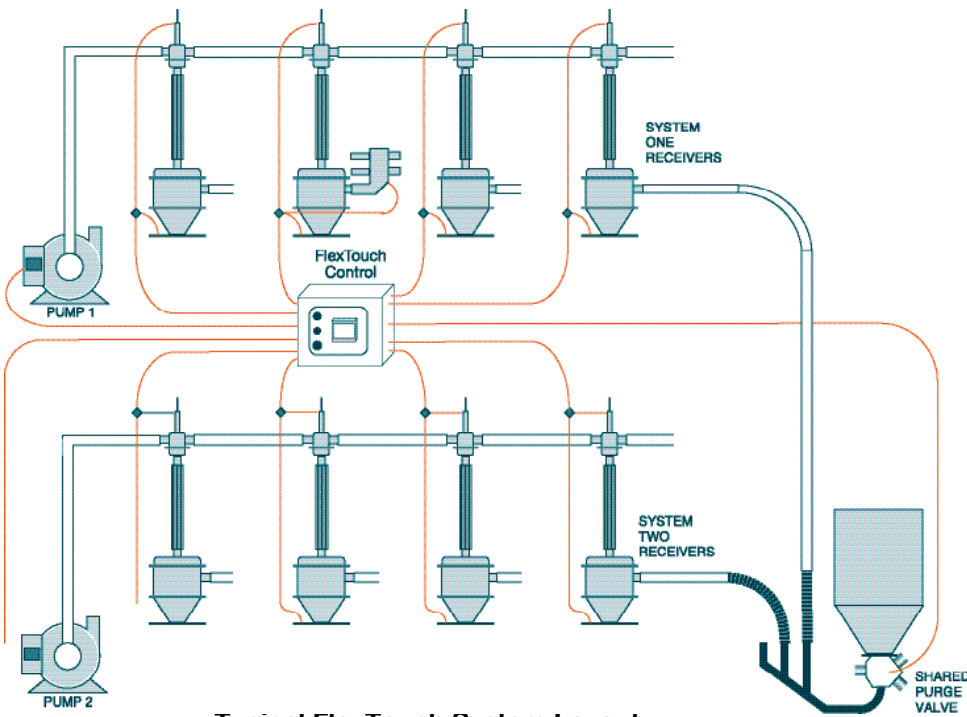
- **ColorNet™ Networkable Color HMI Required for Remote PC Access:**

(Upgrade for 4" or 7" color touch screen)

- **Input power:** 230/1/50/60 (in lieu of 115 VAC standard)

- **Alarm strobe:** (must match panel I/O voltage)
115 VAC or 24 VDC

Note: Separate proportional settings may be made for each optional proportioning receiver with a pump system, however, all valves within that system are connected by a common signal. In operation all proportioning valves within a pump system operate at the same time.



Typical FlexTouch System Layout