

Vacuum Receivers – Hinged Lid

VRH Series Hinged Lid Vacuum Receivers 12 to 76 lb. (5 to 34 kg) Capacity (Based on 38 lb./ft.³ material density)

VRH Series receivers feature a hinged lid with an external fill valve and provide transfer of plastic pellets and regrind using centralized vacuum pumps and controls.

Standard models are constructed for flange mount to existing bins or hoppers. An external fill valve (EFV) provides integral vacuum for each receiver when multiple are used in a system. The EFV vacuum vent extends clean-out intervals and reduces material discharge time. Optional pulsed air blowback package reduces filter clogging or erratic material discharge associated with many regrinds.

Hinged Lid with Adjustable Mount

Quick, hands-free access to filter. Easily reconfigure inlet-to-hinge orientation.

Stainless Steel Construction

Rugged 14 gauge SS body section provides a wear resistant, non-ferrous material contact surface.

Local On/Off Switch and LED

Convenient pause for material change, and visual indicator for fill cycle.

Terminal Box w/Plug & Cable

6-Pin quick release plug with 12 ft. cable.

Plus:

- Reinforced 20 mesh stainless steel pellet screen
- Discharge Flapper Valve
- Integrated Demand Level Switch
- Inlet/outlet diameters of .5" to 4" (38 – 102 mm)
- 24 VDC or 115 VAC control voltage
- 2-Year Warranty

Modular Design, Quick-Release Clamp

Easily rotate entire body section any time for convenient use - no tools required.

Material Inlet Deflector Check Valve

Neoprene gasket provides positive seal. No external material line valve needed!

Tangential Material Inlet

Provides cyclonic air/material separation to minimize material degradation



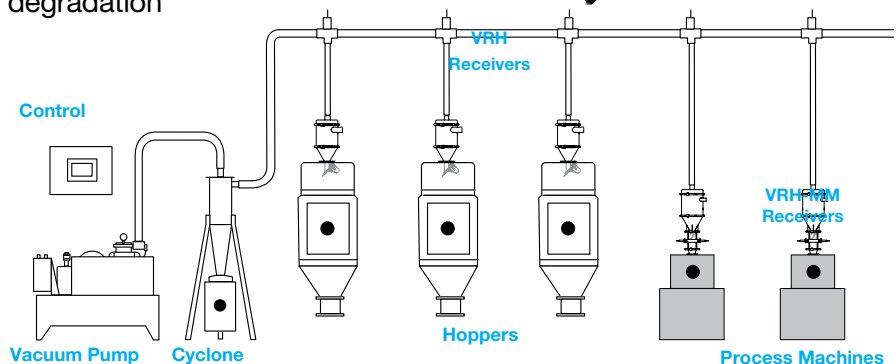
VRH Hinged Lid for Quick, Hands-free Access



VRH-38



Traditional Lid Arrangement



DRI-AIR®
Industries, Inc.

 PROUDLY MADE IN THE USA

Many premium features not found on other receivers!



Heavy duty stainless steel construction. Spring loaded butterfly clamps hold the hinged stainless steel lid securely in place and provide easy access for clean out (no tools required).



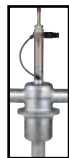
Custom molded neoprene gasket on full-flow dump throat assures tight seal and no loss of vacuum. Unique design keeps resin from contacting gasket surface.



Tangential inlet provides cyclonic flow minimizing material degradation. Internal flapper with neoprene seal allows common line system use.



Integral, lid mounted External Fill Valve (EFV) for vacuum sequencing is standard for vacuum lines sizes up to 3" OD.



Lid with stub and a station valve standard on models with 4" OD vacuum lines, and available as an option for smaller vacuum line sizes.



Local control with ON/OFF switch to pause demand.



LED fill indicator verifies operating status.

Eliminates walking to central control panel.



Optional features for enhanced performance!

Blow Back - Provides a powerful filter cleaning pulse after a conveying cycle. The frequency of pulses is selectable in the control.



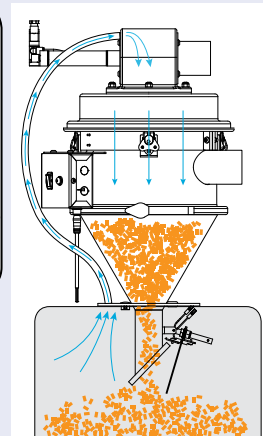
Internal Blow Back on VRH-12 & -19



External Blow Back on VRH-38 & -76

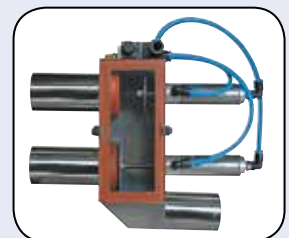
VRH with Closed Loop Vent

Uses air from the hopper below to vent the chamber during discharge while keeping ambient air out.



External Proportioning Valve

Provides proportioning/layering of materials when used with VRH Receivers.



Specifications:

Model/ Configuration		Volume		Capacity		Line Size	
		ft	liters	lb	kg	in	mm
VRH-12-XX	Standard	1/3	9	12	5.4	1.5, 2, 2.5, 3	38, 50, 64, 76
VRH-12-XX-MM	Machine Mount						
VRH-19-XX	Standard	1/2	14	19	8.6	1.5, 2, 2.5, 3	38, 50, 64, 76
VRH-19-XX-MM	Machine Mount						
VRH-38-XX	Standard	1	28	38	17.2	1.5, 2, 2.5, 3.0, *4	38, 50, 64, 76
VRH-38-XX-MM	Machine Mount						
VRH-76-XX	Standard	2	56	76	34.5	2, 2.5, 3, *4	50, 64, 76, 102

Resin capacity based on 38 lb./ft³ bulk density.

*4" available ONLY with Remote Vacuum Station Valve; VRH-12 and VRH-19 not available with -40.

Accessories:

(Separate line item on order and shipped separately).

Level Switch, Capacitance:

30 mm diameter, 2m cable

Pulsed Blowback Control:

Compact, mini-PLC control for generating adjustable blowback signals when central control is not equipped for receivers with blow back. Installs near receiver. 24 VDC or 115/1/60

External Proportioning Valve with Coupler:

Available for all receivers.

(See separate data sheet)

Proportioning Valve Control:

Compact mini-PLC control for generating adjustable proportioning signals when a central control is not equipped with proportioning capability. Located conveniently near the proportioning valve at the receiver for local rather than central control adjustment.

24VDC or 115/1/60

Station "T" Sequencing Valve:

Use when receiver is equipped with stub outlet in lieu of standard lid mounted vacuum valve.



Retrofit Glass Hopper Sizes for Existing MM Units

(Replaces 2 lb. Glass)

Field conversion kit includes base, glass, top adapter plate and discharge valve.

8 lb., 12 lb. or 16 lb. Glass

Options:

(Separate line item on order).

Voltage: 24 VDC standard, 115 VAC is a no charge option

Pulsed Blow Back: (Vent Block kit included)

DeviceNet Cables:

(in lieu of (deletes) standard drop cable and terminal box with ON/OFF switch and fill light.)

High Heat Packages for Discharge & Filter Assemblies, and for Inlet Check Valve:

(Above 250°F)

Must Specify JIT Glass Hopper Size – MM Units

2 lb., 8 lb., 12 lb. or 16 lb. Glass (must specify)

Note: 2 lb. glass not available on VRH-38

Closed Loop Vent for EFV Vacuum Valve

Extended 20 ft. Drop Cable:

In lieu of Standard 12' Cable

Custom Drilling of MM Flange:

(Standard base flange is blank for customer drilling.)

Alternate Vacuum Tube Connections:

Replace EFV with plain tube stub:

(Requires Station "T" Sequencing Valve, sold separately)

Increase Vacuum Tube Diameter:

(NOTE: -15/20 increases 1.5" OD to 2.0" OD)

Extended Wear Package for VRH-12, through VRH-76 Models

Includes:

- Removable ceramic lined inlet
- Ceramic coated inlet flapper check valve
- Removable ceramic coated impact wear plate
- SS Discharge flapper

Ceramic lined inlet diameters available

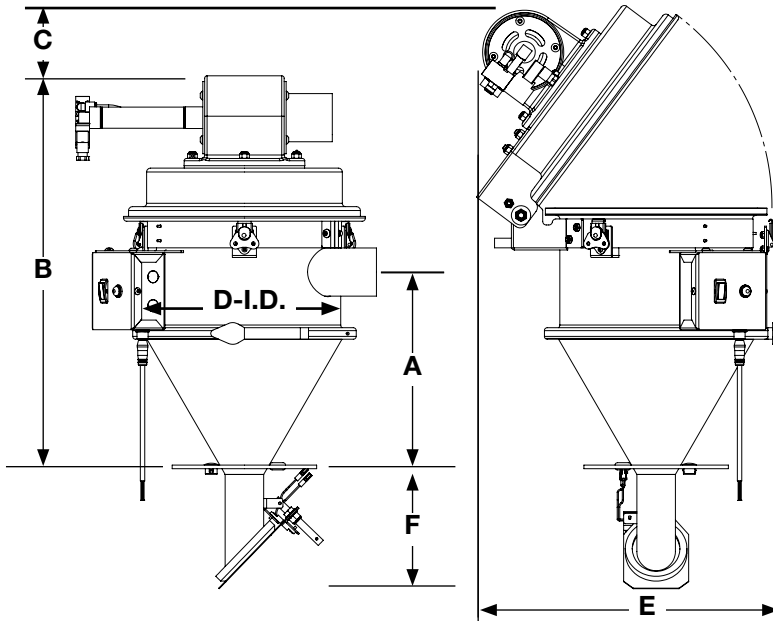
- VRH-12 (1.5" - 2.5")
- VRH-38 (1.5" - 3")
- VRH-19 (1.5" - 2.5")
- VRH-76 (1.5 - 3.0)

Dimensions

Standard

Model	A		B		C		D		E		F	
	in	cm	in	cm	in	cm	in	cm	in	cm	in	cm
VRH-12-XX	10.6	22	20.4	51.8	5.5	14	10	25	18.7	47.5	6.2	15.7
VRH-19-XX	14.6	37	24.4	62	5.5	14	10	25	18.7	47.5	6.2	15.7
VRH-38-XX	17.7	45	27.6	70.1	11.4	29	16	41	24	61	8.7	22.1
VRH-76-XX	27	69	37.6	95.5	11.4	29	16	41	24	61	8.7	22.1

VRH-38-MM height is 51.45" (16 lb. glass standard)



Machine Mount Models Add to Dimension "B" for VRH-12 and 19

- Add 11.6" (29.5 cm) for 2 lb. glass
- Add 15.3" (38.9 cm) for 8 lb. glass
- Add 19.3" (49 cm) for 12 lb. glass
- Add 22.3" (56.6 cm) for 16 lb. glass

Note:

- 2 lb. glass N/A for VR-38



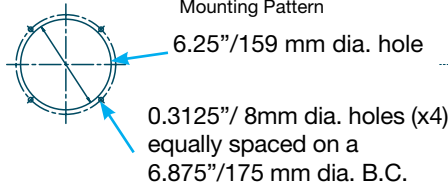
VRH-38-MM
with 16 lb. glass



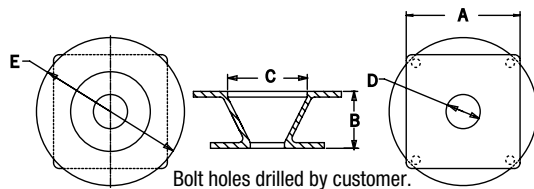
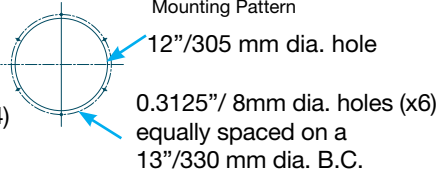
VRH-19-MM
with 12 lb. glass

Machine Mount Models with a height-adjustable photo eye level sensor, base plate adapter, dump valve and quick disconnect clamps for easy clean out.

VRH-5, VRH-12 & VR-19
Mounting Pattern



VRH-38 & VRH-76
Mounting Pattern



Machine Mount Adapter
(Included with MM models)



2 lb. Glass Hopper
Adapter



8-16 lb. Glass Hopper
Adapter

Machine Mount Adapter Dimensions

Model	Glass Size lb./kg	A		B		C		D		E	
		in	cm	in	cm	in	cm	in	cm	in	cm
VRH-(12, 19 & 38)-MM	2/9	5	12.7	2.5	6.4	3.5	8.9	1.5	3.8	6.5	16.5
VR-MM-F65*	2/9	6.5	16.5	2.5	6.35	3.5	8.9	2.25	5.7	6.5	16.5
VR-MM-8, -12, -16**	Varies	6	15.2	5.7	14.5	8	20.3	2	5.1	10	25.4

* Optional 2 lb. Glass Adapter Dimensions
** Optional Large Glass Adapter Dimensions