

E/PLUS™ DRYERS

The New Standard in Energy-Efficient Dryers – **E-PLUS™ Dryers** offer unmatched energy efficiency plus!

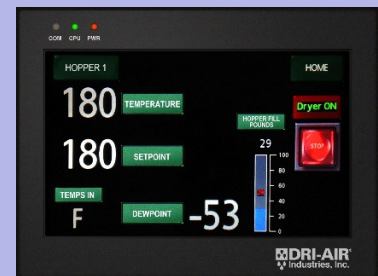
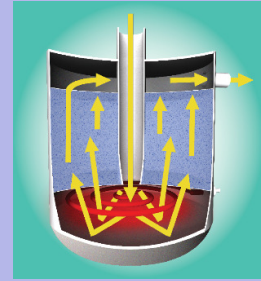
- 30 – 50% more energy efficient than wheel dryers
- Temperature range of 105 F to 350 F, dewpoints to -90 F
- Automatic slide gate keeps material line clear, prevents moisture contamination.
- Slide out take off box for easy cleaning
- Hopper Monitoring with visual display
- Intuitive / High visibility touch screen
- Fully insulated hopper



Dri-Link Mobile App provides remote access from mobile devices

Revolutionary Parabolic Dryer:

A unique heater design coupled with a parabolic regeneration chamber provides optimized air flow for unmatched energy efficiency and maximum moisture pickup



E-PLUS™ Dryer Control

Features a vibrant color touch screen display for easy setting of temperatures, timers and loading settings. Exclusive Material level control is displayed and set at the touch screen so you can match the dryers throughput to your application.

Model	Process rate	Hopper size	Dimensions (l x w x h)
E-25	25 lbs. hr.	75 lbs.	42" x 18" x 54"
E-50	50 lbs. hr.	175 lbs.	40" x 24" x 70"
E-100	100 lbs. hr.	330 lbs.	48" x 30" x 72"

Conveyance options

Conveyance to the press:

E-Series dryers have several options to convey dried resin from the drying hopper to the press / extruder.

- E-50 & 100 Series: Our closed loop, Dri-Shot dry-air conveyance system, DAC compressed air loader or integral press loaders
 - E-25 Series: Our DAC compressed air loader or integral press loaders
- Both dryers can be connected to existing and new central conveyance systems

Conveyance to the drying hopper:

Integral motor hopper loaders, DAC compressed air loaders and central vacuum receivers are available



Dri-Shot receiver



Integral hopper loader



Phone: 860-627-5110 email: sales@dri-air.com
16 Thompson Road, East Windsor, CT 06088
www.dri-air.com