

Vacuum Purge Take-Off

VPT Series: Outlet Diameter 1.5" - 2.5" (38 - 65mm)

Combination take-off box/purge valve allows conveying followed by line clearing with ambient or dry air.

Mounted below a drying hopper or other material storage vessel, the valve's upper chamber is gravity filled with resin. When conveying begins, the pneumatic valve dispenses material into the conveying line. The valve closes during conveying, allowing the remainder of vacuum-on time to clean the conveying line with ambient or dry air.



Stainless Steel Construction

For years of trouble-free service

Dual Mounting Plate

Allows installation on a 4.75" or a 6" (12 or 15.2 cm) bolt pattern

Tool-free, Safe Draining and Cleanout

Through a hinged drain chute with safety-interlock

Adjustable-Stroke Purge Valve Cylinder

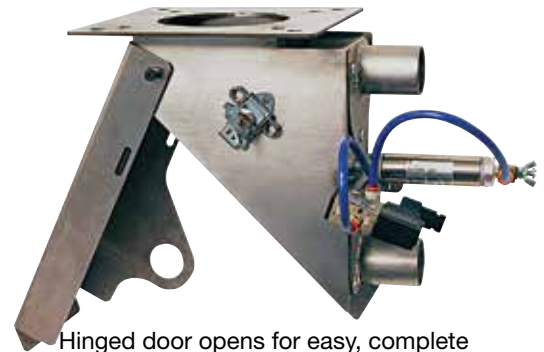
For optimizing operation with any material or system setup

Fixed Conveying Air Supply Port

Simplifies dry air supply line installation

Internal Screen On Conveying Air Inlet

To prevent pellet dribble or ingestion of contaminants during vacuum. Optional filter screen for ambient convey and purge



Hinged door opens for easy, complete draining of resin.

Plus:

- 24 VDC or 115 VAC operation
- 2-Year warranty

DRI-AIR®
Industries, Inc.

 PROUDLY MADE IN THE USA

Specifications:

Part Number	A (Flange to discharge center line)	
	in.	mm
VPT-15	1.5	40
VPT-20	2.0	50
VPT-25	2.5	65

Standard operating voltage:
24 VDC Add-11 for 115 VAC voltage

Options: Separate line item on order.

DeviceNet Cable(s):

in lieu of standard cable(s) 24VDC

Filter Screen for Ambient Air Purge

Accessories:

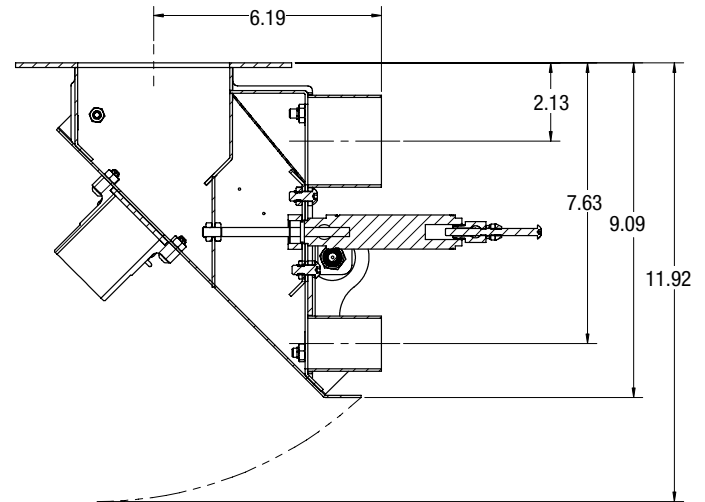
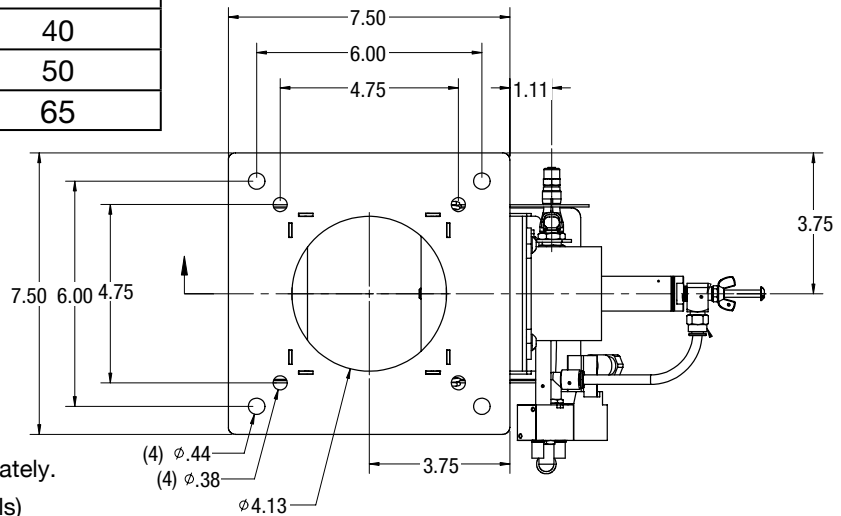
Separate line item on order and shipped separately.

Hopper to VPT Adapters: (For all models)

8" (20.3cm) sq. bolt pattern

9.75" (24.8cm) sq. bolt pattern

14" (35.6cm) sq. bolt pattern



How it VPT Works:

