

DRI-AIR Industries, Inc.

The Drying and Blending Experts



Since 1974 Dri-Air has been the industry leader in proven desiccant dryer technology, offering the highest quality at competitive pricing. Our constant attention to detail and incredible response time has helped us sell thousands of drying systems worldwide. From 1 pound to 3000 pounds per hour, we offer solutions to a wide range of industries from simple solutions to complex custom applications.

**DESIGNED HERE
BUILT HERE
SERVICED HERE
RIGHT HERE IN THE USA**

Customer satisfaction is our priority. It's our unwavering commitment to provide energy efficient dryers that effectively dry any material that has supported the best, world class customers in the industry. Our U.S. built systems offer years of trouble-free service.



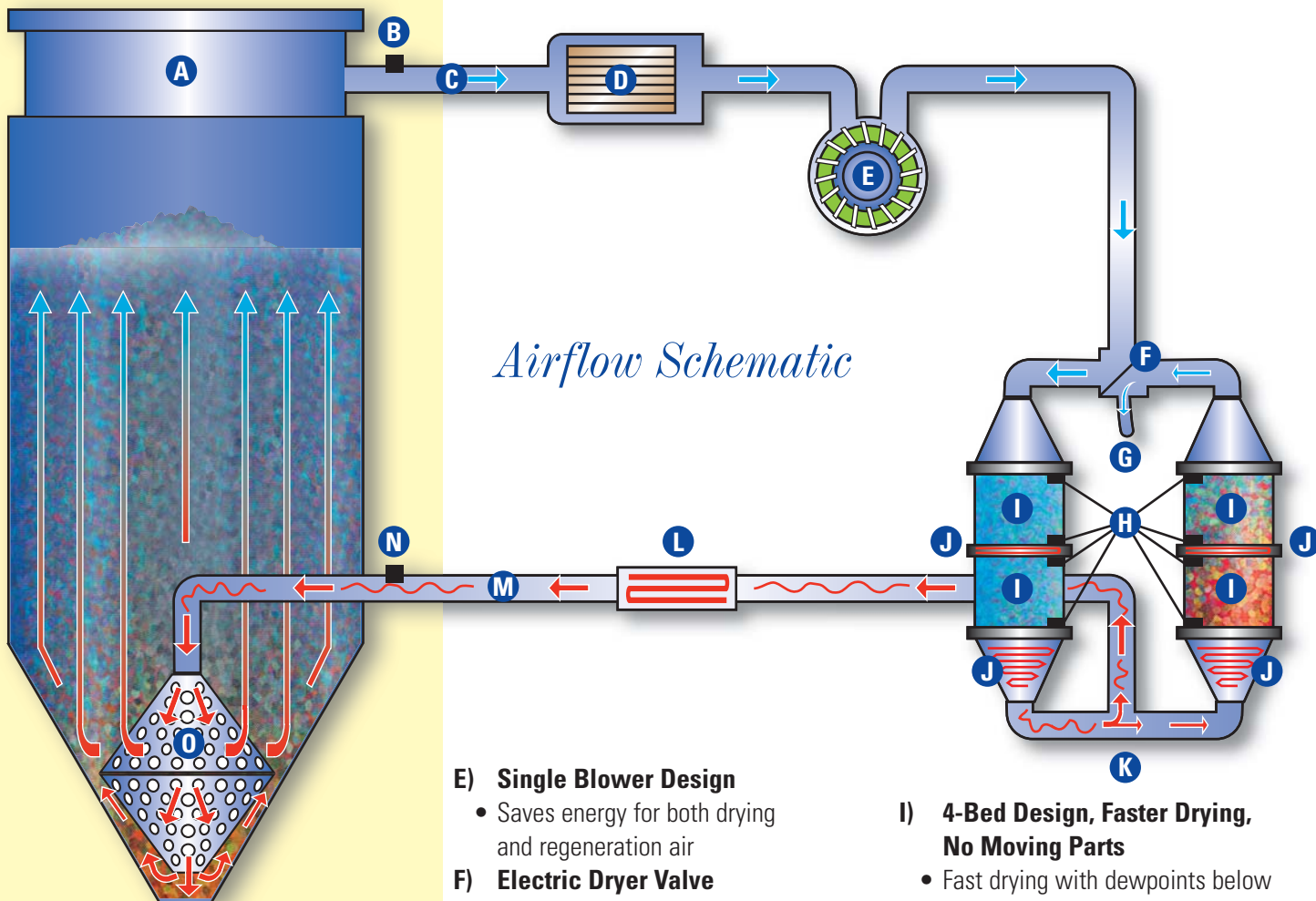
Visit us online



T: 860.627.5110 | E: sales@dri-air.com www.dri-air.com

The components that make up the heart of the Dri-Air system

All Dri-Air dryers utilize a single blower design and a slip stream of dry air for regeneration for un-matched energy efficiency and dewpoints down to -131°F !



Airflow Schematic

A) Drying Hopper

- Stainless steel insulated construction
- Laser cut access door eliminates troublesome door gaskets

B) Temperature Setback

- Prevents over-drying – Thermocouple monitors the return temperature & material usage to guard against over drying and degradation of resin caused by excessive residence time in the hopper

C) Return Line

D) Dryer Filter Element

E) Single Blower Design

- Saves energy for both drying and regeneration air

F) Electric Dryer Valve

- No compressed air required
- High temperature, self-adjusting, long-life seals
- 5 year warranty
- Valve position monitored by ADC & SmartTouch Control

G) Vent

H) Thermocouple Controlled Regeneration

- On demand, energy efficient regeneration
- No temperature spikes
- Thermocouples monitor temperature in desiccant beds

I) 4-Bed Design, Faster Drying, No Moving Parts

- Fast drying with dewpoints below -49°F down to -131°F !
- Most energy efficient dryer on the market (when compared to compressed air, rotary wheel, vacuum and other dual bed dryers)

J) Process/Regeneration Heaters (4)

K) Slip Stream of Dry Process Air

- No ambient air for regeneration and cool down

L) Process Heater

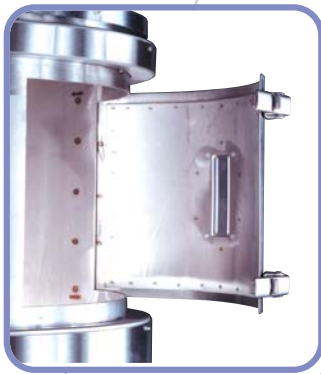
(on 50-CFM Models and larger)

M) Supply Line

N) Process Thermocouple

O) Air Diffuser Basket

Why Dri-Air?



- Laser cut access door, eliminates troublesome gaskets
- Diffuser basket assures even heat distribution, faster drying with no cold spots
- Your choice of touch screen or ADC control
- Dryers rated at 1 CFM per hour. More air flow for faster drying of today and tomorrow's resin
- Exclusive bag filter with blowback for reduced conveyance filter maintenance
- Ample room under the hopper for easy cleaning
- Your choice of 2 or 4 desiccant beds. 40-60% more energy efficient than Wheel dryers



2 Bed tower construction

4 Bed tower construction



Dri-Air vs. Wheel
Energy Comparison @ 200 lbs/hr
Cost Per Year @ 10¢ per kw/hr

\$4,620	\$7,980
Dri-Air 5.5 kw	Wheel 9.5 kw

HPD 4 Bed Portable Dryers

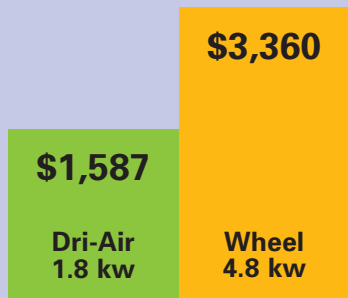
- 40-60% more energy efficient than wheel dryers with no moving parts!
- Dewpoints as low as -131° F
- Dryers sized to dry all materials not just Polycarbonate
- Faster drying in any ambient conditions
- Ideal for demanding medical resins and applications
- On demand regeneration provides stable temperatures at the drying hopper



HP's stacked tower design provides faster drying and no moving components for trouble free, reliable operation

Dri-Air vs. Wheel

Energy Comparison @ 50 lbs/hr
Cost Per Year @ 10¢ per kw/hr



DRI-AIR
Industries, Inc.

www.dri-air.com
Call us at 860.627.5110

HPD Series

More efficient, more air flow and lower dewpoints equal faster, more energy efficient drying than wheel and compressed air dryers. Dri-Air HPD dryers include our patented 4 bed dryer, drying hopper and optional closed loop loading systems, eliminating press/extruder mounted drying hoppers, for fast, safe material changes.



HPD-13

Integrated Hopper Loader

Available with PD dryers having our closed loop loading system. Brushless hopper loading eliminates noisy, maintenance-prone vacuum motors.

- One power connection
- Completely self-contained
- Available with single or proportioning (virgin/regrind) hopper loaders



HPD with integrated hopper loader

Dri-Shot Loader

Convey dried material with dry-air, eliminating moisture contamination with compressed or ambient plant air. Closed loop loaders are available with portable dryers or as stand-alone units. Eliminate press/extruder mounted drying hoppers.



DS-2 receiver

DS-1 receiver

- Stainless steel construction with internal flap valve that provides a positive seal at the throat – simplifies installation on color feeders, slide gates, swing arms or magnet drawers

- SmartTouch Controller can communicate with SmartView interface for monitoring your dryers on your desktop

HPD Model	Process Rate		Hopper Capacity		Dimensions	
	(lbs/hr)	(kg/hr)	(lbs)	(kg)	[l/w/h] inch	[l/w/h] cm
1	10	5	30	14	25/39/57	64/99/145
2	20	10	60	27	25/39/62	64/99/169
3	30	14	100	45	25/39/60	64/99/152
4	40	18	150	68	25/39/73	64/99/185
5	50	25	150	68	30/52/75	76/152/191
6	60	27	200	91	30/52/69	76/152/175
7	80	36	300	136	30/52/84	76/152/213
8	100	45	300	136	30/52/84	76/152/213
9	125	50	400	181	50/42/92	127/107/234
10	160	73	600	272	50/42/112	127/107/284
11	220	100	600	272	50/42/112	127/107/284
13	300	150	1000	453	66/42/116	167/107/295



SMART TOUCH Controls

- Our new SmartTouch Control is standard on our HPDII dryers and is Industry 4.0 ready! OPC/UA open communication through the optional Ethernet switch or WIFI Bridge for wireless communication. Other features include 7" HMI, -49°F dewpoint monitor, 7 day timer, resin library, dewpoint and temperature trending, alarms, diagnostics, event log, run and filter timers, 3 level password protection and optional temperature setback to prevent overdrying!

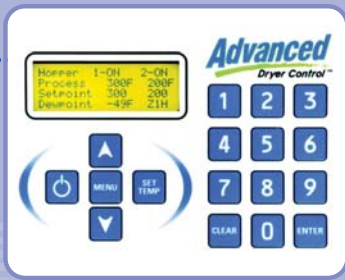
SMARTVIEW Interface

- Our new SmartView desktop app lets you see the big picture – multiple dryers on your desktop without walking the plant floor. Connect through our available Ethernet switch or wirelessly with our available WIFI bridge for a cable free installation. View and set temperatures and alarms all from one location.



www.dri-air.com

Call us at 860.627.5110



ADC Control System

- Our proven, time tested ADC control is standard on our APD dryers and includes, -49°F dewpoint monitor, 7 day timer and diagnostic functions
- Spike Free Regeneration**
ADC controls feature temperature controlled regeneration. Thermocouples in the desiccant tower monitor and adjust the regeneration cycle, changing regeneration parameters as conditions change – the net result is substantial energy savings and spike free bed changeovers!

Loading Options

- Dri-Air closed loop loading eliminates moisture contamination with ambient plant air. Loader includes: brushless motor, controls and DS receiver
- DAC Compressed air loaders offer a quiet, easy to use loader that uses your shop air to convey material



www.dri-air.com

Call us at 860.627.5110

APD Series

Industry standard 2 bed dryer, hopper and optional loading systems. Dri-Air's APD series dryers provide easy, reliable and safe material handling by eliminating press/extruder mounted drying hoppers for fast material changes.

- Energy efficient single blower design uses 40-60% less energy than wheel dryers
- Reliable, dual tower design with no moving parts
- 49°F dewpoint levels for fast drying of engineering resins
- Includes -49°F dewpoint monitor and 7 day timer
- No moving parts and stainless steel construction for reliable, trouble free operation



APD-4 portable dryer with ADC Control and dual closed loop loader

APD Model	Process Rate		Hopper Capacity		Dimensions	
	(lbs/hr)	(kg/hr)	(lbs)	(kg)	[l/w/h] inch	[l/w/h] cm
1	7.5	5	30	14	25/39/57	64/99/145
2	15	7	60	27	25/39/62	64/99/169
3	25	12	100	45	25/39/60	64/99/152
4	35	16	150	68	25/39/73	64/99/185
5	40	20	150	68	30/52/75	76/152/191
6	50	25	200	91	30/52/69	76/152/175
7	75	35	300	136	30/52/84	76/152/213
8	90	45	300	136	30/52/84	76/152/213
9	110	45	400	181	50/42/92	127/107/234
10	150	68	600	272	50/42/112	127/107/284
11	200	91	600	272	50/42/112	127/107/284

Dri-Shot Loader

Convey dried material with dry-air, eliminating moisture contamination with compressed or ambient plant air. Closed loop loaders are available with portable dryers or as stand-alone units. Eliminate press/extruder mounted drying hoppers.



DS-2

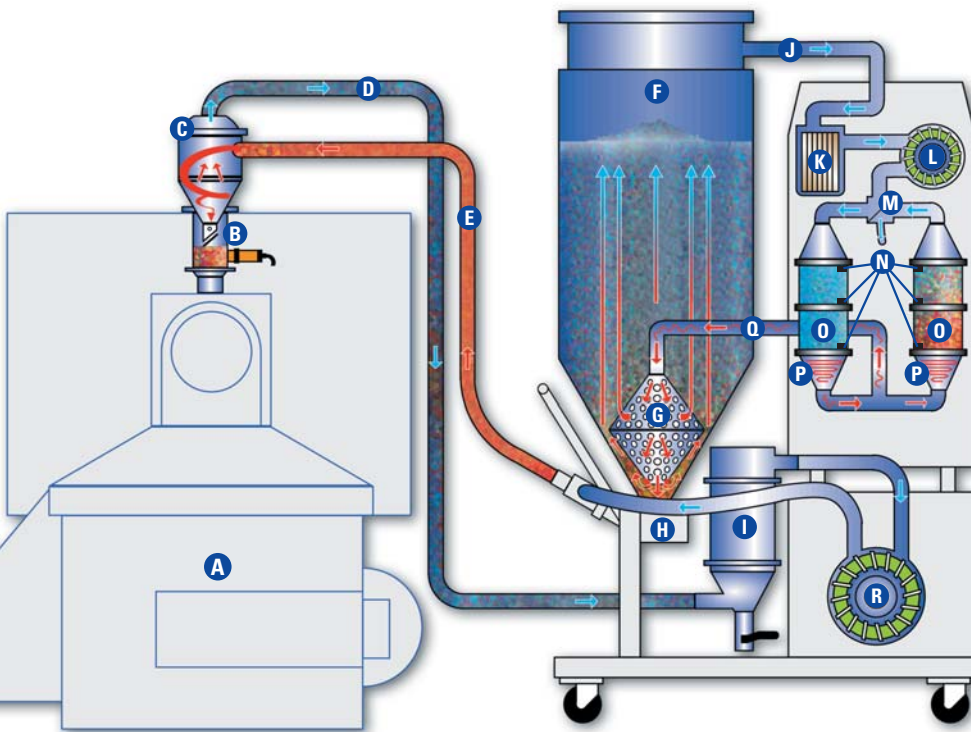
DS-1

- Stainless steel construction with internal flap valve that provides a positive seal at the throat – simplifies installation on color feeders, slide gates, swing arms or existing magnet drawers
- Adjustable time-fill accommodates process rates up to 750 lbs/hr Larger sizes available

System features

- Brushless blower for quiet, reliable operation
- Optional bag filter with blow back for dusty materials
- Small, Dri-Shot receiver improves plant safety
- Can be used to load drying hoppers for a complete, integrated package
- Can be configured to load two presses/extruders

- Ⓐ Molding Machine or Extruder
- Ⓑ Flap Valve
- Ⓒ Material Receiver
- Ⓓ Vacuum Line
- Ⓔ Material Line
- Ⓕ Drying Hopper
- Ⓖ Air Diffuser Basket
- Ⓗ Take-Off Box
- Ⓘ Loader Filter
- Ⓝ Return Line
- Ⓚ Dryer Filter Element
- Ⓛ Vortex Dryer Blower
- Ⓜ Electric Air Valve
- Ⓝ Thermocouples
- Ⓞ Desiccant Beds
- Ⓟ Process/Regeneration Heaters
- Ⓠ Supply Line
- Ⓡ Vortex Loader Blower



Airflow schematic of portable dryer with closed loop loading

DRI-AIR
Industries, Inc.

www.dri-air.com

Call us at 860.627.5110

4-Bed Dual Hopper Portable Dryers

1 dryer, 2 hoppers = fast changeovers and no downtime!

The H-PDII systems provide maximum flexibility.

Ideal for frequent material changes the PDII dryer will eliminate downtime and maximize uptime!

System features

- Automatic shut off valves (inlet/outlet) isolate hoppers not in use or while being cleaned
- Easy to use touch screen display for setting different drying temperatures for each hopper
- Temperature set back (optional) prevents over drying by lowering drying temperatures when usage slows or stops
- Service two presses/extruders with our dual closed loop loader option

- Drying and processing from one hopper while pre-drying in the other hopper for on the fly changeovers, eliminates downtime
- Material changes are fast and easy by moving the material line from one hopper to the other
- Reduce valuable floor space, eliminate the need for a second dryer by positioning the dryer between two presses/extruder – ideal for two shot injection molders

SMART TOUCH Controls

- Our new SmartTouch Control is standard on our HPDII dryers and is Industry 4.0 ready! OPC/UA open communication through the optional Ethernet switch or WIFI Bridge for wireless communication. Other features include 7" HMI, -49°F dewpoint monitor, 7 day timer, resin library, dewpoint and temperature trending, alarms, diagnostics, event log, run and filter timers, 3 level password protection and optional temperature setback to prevent overdrying!

Loading Options

- Dri-Air closed loop loading eliminates moisture contamination with ambient plant air. Loader includes: brushless motor, controls and DS receiver
- DAC Compressed air loaders offer a quiet, easy to use loader that uses your shop air to convey material



H-PDII with 15 & 5 pound hoppers



H-PDII with 60 pound hoppers



www.dri-air.com

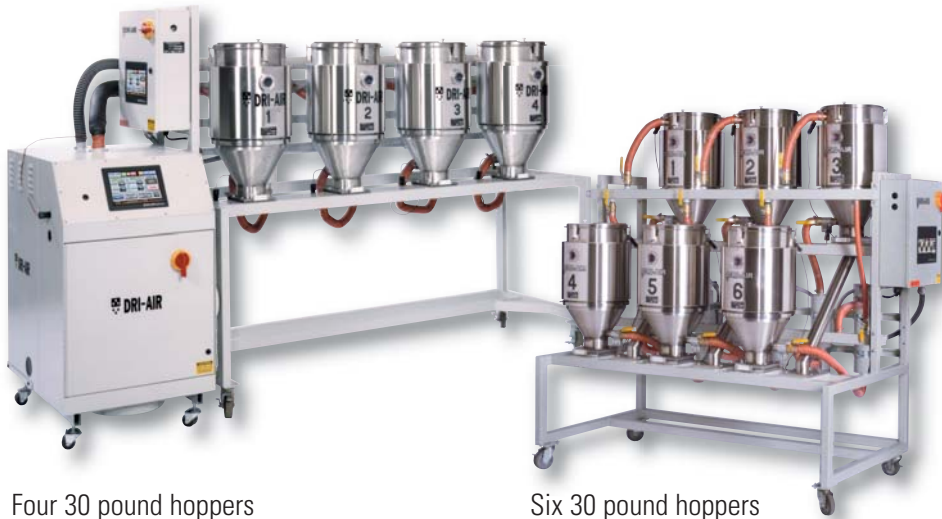
Call us at 860.627.5110

Hopper Sizes	Dimensions	
	[l/w/h] inch	[l/w/h] cm
5, 15 & 30-lb	30/52/59 inch	76/132/150 cm
60, 100 & 150-lb	35/63/82 inch	89/160/208 cm
200 & 300-lb	35/67/82 inch	89/170/208 cm

Multiple Hoppers with One Dryer

One dryer connects to multiple hoppers for integrated, compact drying solutions or system can be configured for central conveyance.

- Dry different materials each at their own temperature
- Pre dry material for fast changeovers



Four 30 pound hoppers

Six 30 pound hoppers

Integrated Central Conveyance Systems

Integrated, closed loop conveyance systems provide you with a complete central drying and conveyance system from 1 to multiple machines.

- **Integrated Conveyance.** Pump, filters and controls are all integrated into the hopper bank's frame for easy installation and minimize floor space



Hopper Bank with (2) 60 lb, (1) 30 LB. hopper and closed loop conveyance to three molding machines

- **Quick change Manifold system.** Quickly change between materials or machines. A wide selection of manifolds are available for maximum flexibility so any machine can connect to any drying hopper

System features

- Hopper Sizes from 2-600 pounds with quantities up to 6 hoppers
- Air manifold with shut off vales (inlet/outlet) isolate hoppers not in use or being cleaned
- Contact us today for custom sizes and configurations



Hopper Bank Controls

- **Our easy-to-use SmartTouch control features a 7" color HMI and provides you with:**
 - 7 Day timer for each hopper – separate start / stop times for each hopper
 - Resin Library – User created temperatures and recipes for each hopper
 - Separate temperature control – run different temperatures in each hopper
 - Run timer – know how long each hopper has been on for
 - Pre-dry feature – prevents conveyance on hopper bank systems equipped with conveyance systems until pre-set times have been met – prevents wet material from being conveyed until it is thoroughly dried
 - Temperature Set Back option – prevents over drying
 - OPC/UA communication with optional Ethernet or WIFI bolt and **SmartView** Interface

DRI-AIR
Industries, Inc.

www.dri-air.com

Call us at **860.627.5110**

Reliable, quiet operation

- A reliable, high pressure regenerative blower provides years of trouble free service. Quiet operation allows you to locate the blower in a wide range of locations without an expensive sound enclosure
- With the pump, filter and control panel on a common floor frame loading systems are ready to install, without the need of outside installation teams saving you time and money on start up
- Difficult, moisture sensitive materials are not a problem with our optional closed loop dry-air conveyance with line purge... keeping material lines clear and resin moisture free!

Central control panel

- The color touch screen shows the operator at a glance receiver status: on, off, filling or alarm
- Fill times, no fill alarms and receiver activation are set up through easy to navigate set up screens
- Single and dual station control panels are also available for press and drying hopper loading



CL features

- Dust and fines are contained in the easy clean filter, not throughout your plant! Tool free filter access through quick release clamps.



www.dri-air.com

Call us at 860.627.5110

Central Loading Systems

Dri-Air's central loading systems are ideal for hopper, press and blender loading.

- Conveying power where you need it while eliminating maintenance prone brush type hopper loaders or expensive to operate compressed air loaders
- Sealed system keeps dust and fines in the filter and not throughout your plant!
- Central pump with filter + control panel are all incorporated into a compact floor frame



Dri-Air Model	Number of Stations	HP	CFM	Overall Dimensions [l/w/h] inch cm		Line Size	Filter Type	Noise Level
DP-3	1 to 2	3	98	30/18/55	76/46/140	1.5"	1 bag	69 db
DP-5	6 to 10	5	216	30/18/55	76/46/140	2.0"	3 bag	72 db

Dri-Shot Receivers

Dri-Shot Receivers include an internal flap for flexible mounting options on drying hoppers or machines.

- Standard features include an internal pellet screen and stainless steel construction
- Control box for on/off control at the press is included. Cable and connector for quick in field wiring to sequence T valve
- Sequence T valves provide the vacuum source for the receivers. Valves can be installed in a common manifold on the pump package, on the receiver, or on a common vacuum line



Dri-Air Model	Receiver Capacity	Overall Dimensions [l/w/h] inch cm		Sight Glass Capacity	Machine Hopper Capacity
DS-1MM	0.1 cubic ft	7.5 x 21	19 x 53	2 lbs	NA
DS-2MM	0.4 cubic ft	11 x 26	28 x 66	2 lbs	15 lbs
DS-3MM	1.0 cubic ft	12 x 36	30 x 91	2 lbs	30 lbs

Central Drying Systems

One dryer connects to multiple hoppers for centralized, expandable drying system.

- Centralized drying systems can be used with Dri-Air or other material handling systems for a complete, central drying and conveying system
- Individual hopper stands include booster heater, manifold with shut off valves
- Additional stands can be added as required for maximum flexibility



HP4-X 300 dryer with (2) 600 & (1) 200 pound hopper

Central Drying and Conveyance Systems

Combined with our Central loading systems our Central drying systems provide you with a complete, closed loop central drying and conveyance system from 1 to multiple machines.

- **Closed loop Conveyance.** Dried resin is conveyed with dry air to prevent contamination. Pump, filters and controls are all integrated into the compact frame for easy installation and minimal floor space



Hopper Bank with (1) 300 lb, (2) 200 lb, (2) 30 lb and (1) 60 lb hoppers, dryer and 6 station conveyance system

- **Quick change Manifold system.** Let's you quickly chose between hoppers and machines so one or more machines can pull dried material from any hopper

System features

- Air manifold with automatic shut off valves (inlet/outlet) isolate hoppers not in use or while being cleaned
- Modular bolt together systems from 60-2000 pounds hoppers and multiple hopper stand systems for hoppers from 5-300 pound hoppers
- Contact us today for custom sizes and configurations



Modular stands bolt together for future expansion



Individual controls and booster heater for precise temperature control



Loading Controls

- Color touch screen allows for easy navigation of menus for setting load times and alarms

DRI-AIR
Industries, Inc.

www.dri-air.com

Call us at **860.627.5110**

Floor Mount Dryers

FM Series

No moving or rotating internal parts.

- Space-saving compact design available for process rates up to 3000 lbs/hr
- Models are available in industry-standard 2-bed (ARID-X FM Series) and high-performance 4-bed (HP4-X FM Series)
- Combine with a press/extruder mounted drying hopper for a complete system – dryer hoses and casters are included

▼ HP4-X FM 150, 200 & 300 shown with optional water after-cooler

▼ Removable panels allow for easy access to internal components HP4-X FM 400-3000

Energy efficiency:

- Most energy efficient dryer in the market (when compared to compressed air, rotary wheel, vacuum and other dual bed dryers)
- Single blower design for process and regeneration air
- On-demand regeneration based on ambient conditions, materials and process rates – not a fixed time cycle!
- Desiccant tower design maximizes heat transfer
- 49°F to -131°F dewpoints as a slip stream of dry air, not ambient air is used for regeneration and cool down of desiccant towers

HP4-X FM 50 – 100 shown with our SmartTouch Control



FM features

- Can be used with Hopper Bank Series and multi-hopper systems
- ADC Control is standard on the 2 bed ARID-X FM. Our HP4-X FM series dryers include our SmartTouch Control.
- Through the door disconnect and casters are standard on all models

Optional items include:

- Water after-cooler, plasticizer trap and high temperature hose
- Visual and audible alarms
- Temperature setback reduces drying temperature when material is dry to prevent overdrying

SMART TOUCH Control

- Our new SmartTouch Control is standard on our HP4-X dryers and is Industry 4.0 ready! OPC/UA open communication through the optional Ethernet switch or WIFI Bridge for wireless communication.



www.dri-air.com
Call us at 860.627.5110

Dri-Air Model	ARID-X		HP4-X		Dimensions [l/w/h] inch		Hose Diameter	Supply Return
	Process Rate (lbs/hr)	Process Rate (kg/hr)	Process Rate (lbs/hr)	Process Rate (kg/hr)	inch	cm		
25, 35	25, 35	14, 18	30, 40	14, 18	24/17/38	60/43/97	1-1/2"	1-3/4"
50, 75, 100	50, 75, 100	25, 35, 45	60, 80, 110	28, 36, 50	32/24/50	76/61/127	2"	1-3/4"
150, 200, 300	150, 200	68, 91	160, 220, 330	73, 100, 150	36/42/64	91/107/163	3"	3"
400, 500	N/A	N/A	400, 500	181, 226	74/42/69	106/187/175	4"	4"
750, 1000	N/A	N/A	750, 1000	339, 453	74/42/69	106/187/175	6"	6"
1500, 2000, 3000	N/A	N/A	1500, 2000, 3000	680, 908, 1360	86/54/74	219/138/188	8"	8"
3800	N/A	N/A	3000	1725	101/54/74	256/138/188	8"	8"

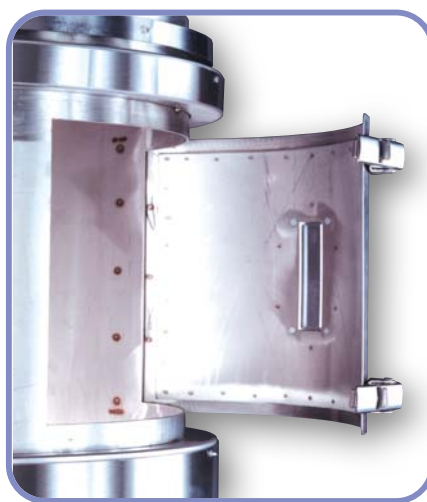
RH Series

Uniform drying coupled with easy accessibility for cleaning are key to proper hopper design.

- Standard sizes range from 5 to 2000 lbs (2 to 907 kg); based on 35 lbs/ft³*
- Unique diffuser basket dries resin down to the slide gate and allows for drying less than full hoppers
- Full length sight glass is standard on Models RH60 and larger



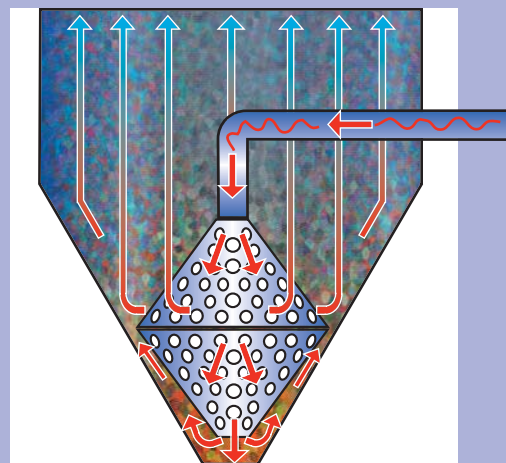
Diffuser basket is constructed of spun stainless steel with a slip coupling for easy removal



Laser-cut access doors provide a smooth, tight fit and eliminates troublesome gaskets

RH features

- Exclusive basket design assures dried material down to the slide gate – no slugs of undried material



- No tools required for hopper cover
- Internal ring on hopper cover prevents damage to hopper loaders and material from clogging filter
- Easy-close slide gate on RH400 thru RH2000 hoppers
- Insulated side walls eliminate heat loss and conserve energy

Dri-Air Hopper Model	CAPACITY		DIMENSIONS					
			A		B		C	
	lbs	kg	in	cm	in	cm	in	cm
RH5	5	2	8	20	6	15	12	31
RH15	15	7	10	25	9	23	18	41
RH30	30	14	14	36	16	41	28	711
RH60	60	27	14	36	28	71	38	97
RH100	100	45	18	46	26	66	39	99
RH150	150	68	18	46	38	97	50	127
RH200	200	91	23	58	30	76	47	119
RH300	300	136	23	58	44	112	61	155
RH400	400	181	27	69	40	102	60	152
RH600	600	272	27	69	60	152	82	208
RH1000	1000	453	36	91	58.5	149	84.5	215
RH1500	1500	680	39	99	70.5	179	97	246
RH2000	2000	907	39	99	94.5	240	121	307

Note: RH5, RH15, and RH30 do not have access doors. *Larger hoppers available, consult factory.



Adjustable fill sensor option ties into hopper loader to accommodate varying process rates for maximum flexibility

DRI-AIR
Industries, Inc.

www.dri-air.com

Call us at 860.627.5110

Hopper Mount & Mini Dryers – Desiccant

Hopper Mounted Desiccant Dryers

AHM dryers save valuable floor space by combining the dryer with the hopper – no compressed air required!

- **Energy efficiency:**
 - Most energy efficient dryer in the market (when compared to compressed air, rotary wheel, vacuum and other dual bed dryers)
 - Single blower design for process and regeneration air
 - On-demand regeneration based on ambient conditions, materials and process rates – not a fixed time cycle!
 - Low, below -40°F dew points are assured as dry air, not ambient air is used for regeneration and cool down of desiccant towers

- Press/Extruder mounted dryers free up floor space and are available for process rates up to 40 lbs/hr
- Industry-standard 2-bed AHM dryer models from 2-4 feature our ADC Control as standard .



AHM-1



AHM 2-4

Dri-Air Model	Process Rate		Hopper Dimensions [l/w/h]		Capacity		Power
	(lbs/hr)	(kg/hr)	inch	cm	(lbs)	(kg)	
AHM-1	10	5	22/21/28	56/53/71	30	14	110/1 phase
AHM-2	15	7	30/29/38	76/74/107	60	27	208, 230, 400, 460/1 or 3 phase
AHM-3	25	12	30/29/39	76/74/96.5	100	45	208, 230, 400, 460/1 or 3 phase
AHM-4	35	16	30/29/51	76/76/130	150	70	208, 230, 400, 460/1 or 3 phase

AHM Controls

- AHM-2-4 dryers include our easy to use ADC Control, The ADC control includes -49°F dewpoint monitor, 7 day timer, dewpoint, thermocouple and temperature alarms
- AHM-1 dryers include our ELC controller which includes set and actual temperatures and high temperature alarm
- **AHM features:**
 - Balanced design – reduces stress on feed throat
 - Optional items include: water after-cooler and plasticizer trap

Arid-X 10 Controls

- **ADC Control includes:**
 - -49°F dewpoint monitor
 - High temp alarm & shutdown
 - 7 day timer
 - Alarm history
 - Thermocouple alarms
 - Optional temperature setback prevents overdrying of materials



ARID-X 10 Mini Dryer

Ideal for lab, insert and small molding machines – no compressed air required!

- Space saving, compact design, only 21 inches (54 cm) high and weighs only 70 lbs (32kg)
- Fast drying with the industry's smallest two bed dryer
- Processing rates up to 10 lbs/hr (5 kg/hr)
- Dimensions 11 x 18 x 21 inches (28 x 46 x 54 cm)
- Available in 110 or 220 volts phase



Available with 5,15,& 30-lb capacity drying hoppers



www.dri-air.com

Call us at 860.627.5110

Desiccant Mini PD Portable Dryers

The Mini PD dryers are ideal for small press /extruders with the dryer and hopper on a compact, castered floor frame. Optional DAC compressed air loaders provide easy, safe changeovers eliminating press mounted drying hoppers.



MPD-15D w/ ADC Control

Dri-Air Model	Process Rate		Model Dimensions [l/w/h]		Hopper Size	
	(lbs/hr)	(kg/hr)	inch	cm	(lbs)	(kg)
MPD-5D	2	1	25x18x26	64x46x66	5	2
MPD-15D	5	2	25x18x33	64x46x86	15	7
MPD-30D	10	5	25x18x38	64x46x96	30	14

Available in 110 or 220 volt single phase electrics

DAC Compressed Air Loaders

DAC loaders offer you a complete portable drying solution.

- Powered by shop air, the DAC loader provides you with a quiet, reliable trouble free loading solution
- Excellent for loading applications such as:
 - Material loading from DRI-AIR PD systems
 - As a stand alone unit pulling from bags, gaylords



Sold complete with wand, hoses, air transvector and adapter

Dri-Air Model	Application	Adapter
DAC-1	Molding Machine	6" x 6"
DAC-2	Drying hopper	3.5" x 3.5"
DAC-3	Drying hopper 5 & 15 lb.	4" x 4"

- Compact Size:**
 - The Mini PD portable dryer replaces press mounted drying hoppers so material changes can be made off the press/extruder. Dryers can be staged outside the molding area for preparation for the next material run, eliminating downtime on material changeovers
- Conveyance to the press:**
 - Our DAC compressed air loader provides quiet, reliable transfer of dried materials to the press/extruder
- Arid-X 10 Dryer:**
 - The compact dual desiccant bed Arid-X 10 dryer is ideal for low throughput/small press and extruder applications. An all electric design, no compressed air is required, just plug it in to a single phase 110 or 220 volt outlet
- Available Options:**
 - Water cooled after coolers for high temperature applications (over 250°F - 120°C)
 - Temperature Set Back prevents over drying of materials



Mini PD Controls

- ADC Control includes:**
 - 49°F dewpoint monitor
 - High temp alarm & shutdown
 - 7 day timer
 - Alarm history
 - Thermocouple alarms



www.dri-air.com
Call us at 860.627.5110

CAHM features

- Dri-Pak membrane ensures low dewpoint air to dry the toughest materials such as PLA's, urethanes and Ultem
- Membrane and super fine filter is integrated into the dryer – no external components to install

ADC Controls



- The ADC Control is standard on our compressed air dryers. Features include: alpha numeric display, -49°F dewpoint monitor, 7 day timer for automatic start/stop and alarms for high temperatures, dewpoints and thermocouple failure

CAMD Micro Dryer

The CAMD Micro dryers are used with our 1/3, 2, and 3 pound clear sight hoppers. Clear sight hoppers feature Pyrex glass lined interior and Butyrate plastic exterior for a clear view of material levels. An integrated process heater provides precise temperature control

CAFM Dryer

The CAFM dryers have an internal process heater and are used with our 5, 15, and 30 pound stainless steel drying hoppers. As with all our compressed air dryers, the Dri-Pak membrane and superfine filter are internal to the dryer so no external components are required for installation

Nitrogen Dryer

For resins that need to be dried in an oxygen free environment, or for extremely moisture sensitive resins, Nitrogen dryers are available with hopper sizes from 1/3 pound to 30 pounds



www.dri-air.com

Call us at 860.627.5110

Compressed Air Hopper Mount Dryers

CAHM dryers are compact, easy to use dryers that use your plant air to dry material.

- Press/Extruder mounted dryers free up floor space and are available for process rates up to 15 lbs/hr
- Dri-Pak membrane provides -40°F dewpoints from your plant's compressed air for fast drying of hygroscopic resins
- **Low Maintenance:**
 - With no moving parts the CAHM series dryers is ideal for low throughput/small press and extruder applications with a simple, easy to use trouble free design
 - Can operate from high (350°F) to low drying temperatures without the need for water cooled after-coolers



CAHM-1 w/ ADC Control

Dri-Air Model	Process Rate (lbs/hr) (kg/hr)		Hopper Dimensions [l/w/h] inch cm		Capacity (lbs) (kg)		Compressed Air Required
CAHM-1	10	5	22/21/28	56/53/71	30	14	2.5 cfm
CAHM-2	15	7	30/29/42	76/74/107	60	27	2.5 cfm

110 or 220 volt 1 phase electrics, 100 psi clean compressed air required

Compressed Air Micro & Floor Mount Dryers

The CAFM Series dryers are easy to use dryers that uses your plant air and internal Dri-Pak membrane to ensure -49°F dewpoint air at the hopper.

- Also available as a Nitrogen Dryer for drying resins in an oxygen free environment



CAMD-1 with ADC Control & 2 lb and 1/3 lb hopper

Dri-Air Model	Process Rate (lbs/hr) (kg/hr)		Dryer Dimensions [l/w/h] inch cm		Booster Heater	Compressed Air Required
CAMD	2	1	11/18/21	28/46/54	external	0.25 – 2 cfm
CAFM	10	5	11/18/21	28/46/54	internal	0.25 – 2 cfm

110 or 220 volt 1 phase electrics, 100 psi clean compressed air required

Compressed Air Mini PD Portable Dryers

The Mini PD dryers are ideal for small press/extruders with the dryer and hopper on a compact, castered floor frame. Optional DAC compressed air loaders provide easy, safe changeovers eliminating press mounted drying hoppers.



MDP-15C w/ ADC Control

Dri-Air Model	Process Rate (lbs/hr) (kg/hr)		Model Dimensions [l/w/h] inch cm		Hopper Size (lbs) (kg)	
	MPD-5C	2	1	25x18x26	64x46x66	5
MPD-15C	5	2	25x18x33	64x46x86	15	7
MPD-30C	10	5	25x18x38	64x46x96	30	14

Available in 110 or 220 volt single phase electrics

DAC Compressed Air Loaders

DAC loaders offer you a complete portable drying solution.

- Powered by shop air, the DAC loader provides you with a quiet, reliable trouble free loading solution
- Excellent for loading applications such as:
 - Material loading from DRI-AIR PD systems
 - As a stand alone unit pulling from bags, gaylords



Dri-Air Model	Application	Adapter
DAC-1	Molding Machine	6" x 6"
DAC-2	Drying hopper	3.5" x 3.5"
DAC-3	Drying hopper 5 & 15 lb.	4" x 4"

Sold complete with wand, hoses, air transvector and adapter

Compact Size:

- The Mini PD portable dryer replaces press mounted drying hoppers so material changes can be made off the press/extruder. Dryers can be staged outside the molding area for preparation for the next material run, eliminating downtime on material changeovers

Conveyance to the press:

- Our DAC compressed air loader provides quiet, reliable transfer of dried materials to the press/extruder

CAMD Dryer:

- With no moving parts the compressed air dryers are ideal for low throughput/small press and extruder applications with a simple, easy to use trouble free design
- Can operate from high (350°F - 175°C) to low (80°F - 25°C) drying temperatures without the need for water cooled after-coolers. Hoppers are available from 5, 15 & 30 pound capacity
- The Dri-Pak membrane ensures low dewpoint air to dry the toughest materials such as PLA's, Isoplast, Ultems



Mini PD Controls

- ADC Control features: alpha numeric display, -49°F dewpoint monitor, 7 day timer, alarm history, high temp alarm, thermocouple alarms and optional temperature set back to prevent over drying of resins. Communication options via Ethernet or USB connection

DRI-AIR
Industries, Inc.

www.dri-air.com

Call us at 860.627.5110

Two Component On-Demand Dry, Blend and Convey

A combination of virgin (natural) and regrind processed in one system.

- Simultaneous dispensing of materials provides superior shot-to-shot consistency – no separation, no batches, no layering
- Dry regrind materials at different temperatures than virgin materials
- Eliminate additional blending equipment to increase floor space



Model with Virgin and Regrind Blending



▲ Tube (Low-Rate) Auger
Helix (High-Rate) Auger ▲

System features

- Cleanout on every load cycle eliminates blended materials in conveying line
- Adjust regrind ratios on-the-fly
- Resins remain separate – no scrapped virgin material due to contaminated regrind
- Eliminate layered materials, typical of proportional loaders



Easy Access Panel

PD Colorant Blending System

Blend-Dry-Convey Colorant & Virgin Material.

- Off the press colorant blending system eliminates press mounted color feeders
- Our Dri-Shot receiver is the only press mounted component



HPD-6 with a 5-lb (2kg) colorant hopper

System features

- Ability to dry colorant, preventing moisture issues
- Easily moved from 1 press/extruder to another – not tied into screw recovery/following circuits
- System can be located outside molding area (from 100 feet and beyond) – no separation of colorant/regrind as materials are dispensed into a moving stream of dry air



www.dri-air.com

Call us at 860.627.5110

Three Component On-Demand Dry, Blend and Convey

A combination of virgin (natural), regrind and colorant processed in one system.

- Simultaneous dispensing of materials provides superior shot-to-shot consistency – no separation, no batches, no layering
- Dry colorants/virgin and regrind materials at different temperatures

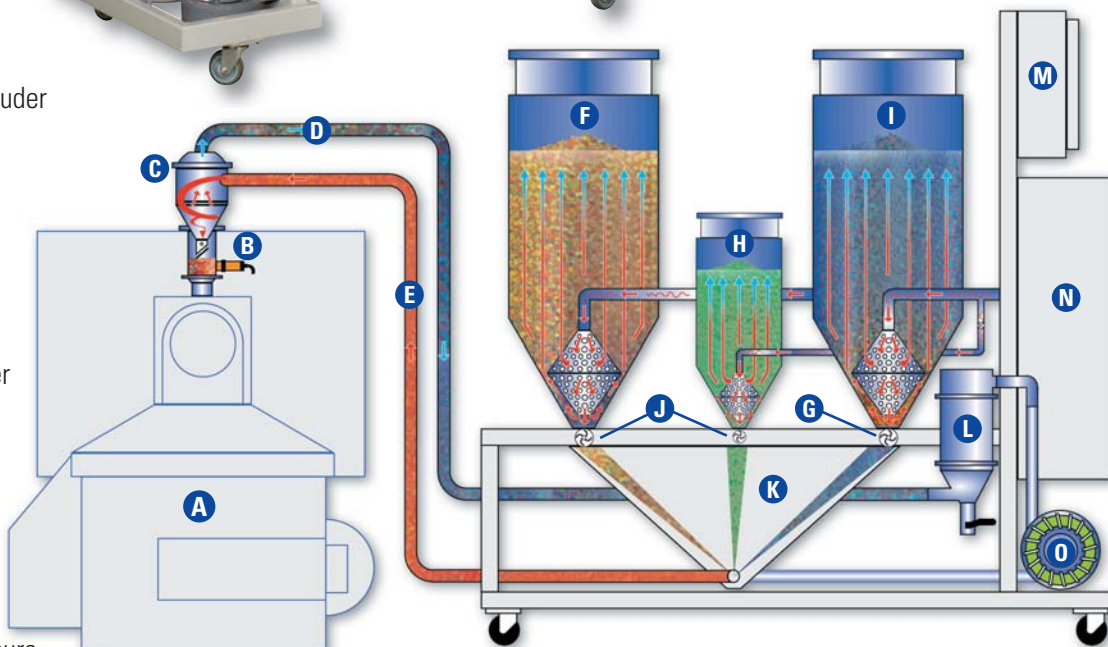
Model with Virgin, Regrind and Colorant Blending



SMART TOUCH Controls

- Our new SmartTouch Control is standard on our HPDII dryers and is Industry 4.0 ready! OPC/UA open communication through the optional Ethernet switch or WIFI Bridge for wireless communication. Other features include 7" HMI, -49°F dewpoint monitor, 7 day timer, resin library, dewpoint and temperature trending, alarms, diagnostics, event log, run and filter timers, 3 level password protection and optional temperature setback to prevent overdrying!

- Ⓐ Molding Machine or Extruder
- Ⓑ Flap Valve
- Ⓒ Dri-Shot Receiver
- Ⓓ Vacuum Line
- Ⓔ Material Line
- Ⓕ Regrind Hopper
- Ⓖ Fixed Rate Auger
- Ⓗ Minor Component Hopper (Colorant/Additive)
- Ⓘ Virgin (Natural) Hopper
- ⓵ Variable Rate Auger(s)
- Ⓚ V-Box with Access Door
- Ⓛ Loader Filter
- Ⓜ Integrated Control Panel
- Ⓝ HPD (4-Bed) Dryer Enclosure with Individual Hopper Heaters
- Ⓞ Vortex Loader Blower



DRI-AIR
Industries, Inc.

www.dri-air.com

Call us at 860.627.5110

VL Series Loaders

Modular stainless steel design from 50 – 650 pounds per hour ▼

Mini PLC Control as standard includes no load alarms, proportioning control and alarm buzzer ▼



VL Series integral loaders feature stainless steel construction, brush type motor & filter blow back for reduces filter maintenance. They also include:

- Remote Mount Mini PLC control
- “No load” alarm with silencer button
- Modular design for quick cleanout and material changeover
- Automatic pulsed blowback filter cleaning with accumulator

Dri-Air Model	VL-5	VL-12	VL-19	VL-38
Volume	1/8 ft ³	1/3 ft ³	1/2 ft ³	1.0 ft ³
Resin Capacity*	5 lb	12 lb	19 lb	38 lb
Recommended Throughput / hr.**	200 lb	400 lb	500 lb	650 lb
Amps @115V	8	13	13	13

*, ** Resin capacity and throughputs are based on 38 lb./ft³ proportioning valves, length of runs, bends flex hose and vertical travel will reduce throughput and motor life.

GSL Series Loaders

GSL Series integral loaders feature stainless steel construction and brushless motors with a tilt open easy clean design. They also include:

- Remote Mount Control Pendant
- SureSeal flapper valve with SS seal surfaces stay aligned and resist wear for reliable operation
- Microburst pulsed blowback filter cleaning keeps filter clean



Control pendant ▲ with magnetic back for mounting pendant on loader or remote mount and includes proportioning control

Tilt open design for easy ▲ cleaning and filter access

Dri-Air Model	GSL-12	GLS-19
Volume	1/3 ft ³	1/2 ft ³
Resin Capacity*	12 lb	19 lb
Recommended Throughput / hr.**	600 lb	1000 lb
Amps @115V	13	13

*, ** Resin capacity and throughputs are based on 38 lb./ft³ proportioning valves, length of runs, bends flex hose and vertical travel will reduce throughput and motor life.

Loader Options

Machine mount adapters for direct mounting of loaders to feed throat available in a wide range of size



Blend in regrind materials with external proportioning valve available for VL & GSL loaders



Contents of this document are subject to change without notice



16 Thompson Road, PO Box 1020
East Windsor, CT 06088-1020
T: 860.627.5110 F: 860.623.4477



www.dri-air.com