

# Floor Mount Dryers

## FM Series

*No moving or rotating internal parts.*

- Space-saving compact design available for process rates up to 3000 lbs/hr
- Models are available in industry-standard 2-bed (ARID-X FM Series) and high-performance 4-bed (HP4-X FM Series)
- Combine with a press/extruder mounted drying hopper for a complete system – dryer hoses and casters are included

▼ HP4-X FM 150, 200 & 300 shown with optional water after-cooler

▼ Removable panels allow for easy access to internal components HP4-X FM 400-3000

### Energy efficiency:

- Most energy efficient dryer in the market (when compared to compressed air, rotary wheel, vacuum and other dual bed dryers)
- Single blower design for process and regeneration air
- On-demand regeneration based on ambient conditions, materials and process rates – not a fixed time cycle!
- Desiccant tower design maximizes heat transfer
- 49°F to -131°F dewpoints as a slip stream of dry air, not ambient air is used for regeneration and cool down of desiccant towers

HP4-X FM 50 – 100 shown with our SmartTouch Control



## FM features

- Can be used with Hopper Bank Series and multi-hopper systems
- ADC Control is standard on the 2 bed ARID-X FM. Our HP4-X FM series dryers include our SmartTouch Control.
- Through the door disconnect and casters are standard on all models

### Optional items include:

- Water after-cooler, plasticizer trap and high temperature hose
- Visual and audible alarms
- Temperature setback reduces drying temperature when material is dry to prevent overdrying

## SMART TOUCH Control

- Our new SmartTouch Control is standard on our HP4-X dryers and is Industry 4.0 ready! OPC/UA open communication through the optional Ethernet switch or WIFI Bridge for wireless communication.



www.dri-air.com  
Call us at 860.627.5110

Dri-Air Model	ARID-X		HP4-X		Dimensions [l/w/h]		Hose Diameter Supply Return
	Process Rate (2-Bed) (lbs/hr)	(kg/hr)	Process Rate (4-Bed) (lbs/hr)	(kg/hr)	inch	cm	
25, 35	25, 35	14, 18	30, 40	14, 18	24/17/38	60/43/97	1-1/2" 1-3/4"
50, 75, 100	50, 75, 100	25, 35, 45	60, 80, 110	28, 36, 50	32/24/50	76/61/127	2" 1-3/4"
150, 200, 300	150, 200	68, 91	160, 220, 330	73, 100, 150	36/42/64	91/107/163	3" 3"
400, 500	N/A	N/A	400, 500	181, 226	74/42/69	106/187/175	4" 4"
750, 1000	N/A	N/A	750, 1000	339, 453	74/42/69	106/187/175	6" 6"
1500, 2000, 3000	N/A	N/A	1500, 2000, 3000	680, 908, 1360	86/54/74	219/138/188	8" 8"
3800	N/A	N/A	3000	1725	101/54/74	256/138/188	8" 8"

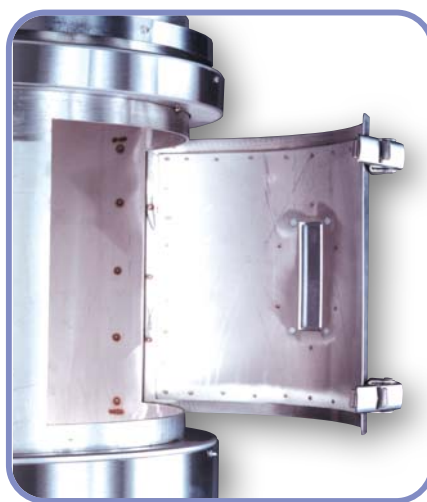
## RH Series

*Uniform drying coupled with easy accessibility for cleaning are key to proper hopper design.*

- Standard sizes range from 5 to 2000 lbs (2 to 907 kg); based on 35 lbs/ft<sup>3</sup>\*
- Unique diffuser basket dries resin down to the slide gate and allows for drying less than full hoppers
- Full length sight glass is standard on Models RH60 and larger



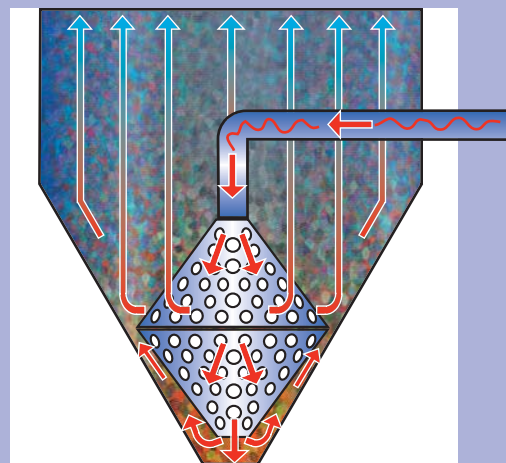
Diffuser basket is constructed of spun stainless steel with a slip coupling for easy removal



Laser-cut access doors provide a smooth, tight fit and eliminates troublesome gaskets

## RH features

- Exclusive basket design assures dried material down to the slide gate – no slugs of undried material



- No tools required for hopper cover
- Internal ring on hopper cover prevents damage to hopper loaders and material from clogging filter
- Easy-close slide gate on RH400 thru RH2000 hoppers
- Insulated side walls eliminate heat loss and conserve energy

Dri-Air Hopper Model	CAPACITY		DIMENSIONS					
			A		B		C	
	lbs	kg	in	cm	in	cm	in	cm
RH5	5	2	8	20	6	15	12	31
RH15	15	7	10	25	9	23	18	41
RH30	30	14	14	36	16	41	28	711
RH60	60	27	14	36	28	71	38	97
RH100	100	45	18	46	26	66	39	99
RH150	150	68	18	46	38	97	50	127
RH200	200	91	23	58	30	76	47	119
RH300	300	136	23	58	44	112	61	155
RH400	400	181	27	69	40	102	60	152
RH600	600	272	27	69	60	152	82	208
RH1000	1000	453	36	91	58.5	149	84.5	215
RH1500	1500	680	39	99	70.5	179	97	246
RH2000	2000	907	39	99	94.5	240	121	307

Note: RH5, RH15, and RH30 do not have access doors. \*Larger hoppers available, consult factory.



Adjustable fill sensor option ties into hopper loader to accommodate varying process rates for maximum flexibility

**DRI-AIR**  
Industries, Inc.

[www.dri-air.com](http://www.dri-air.com)

Call us at 860.627.5110