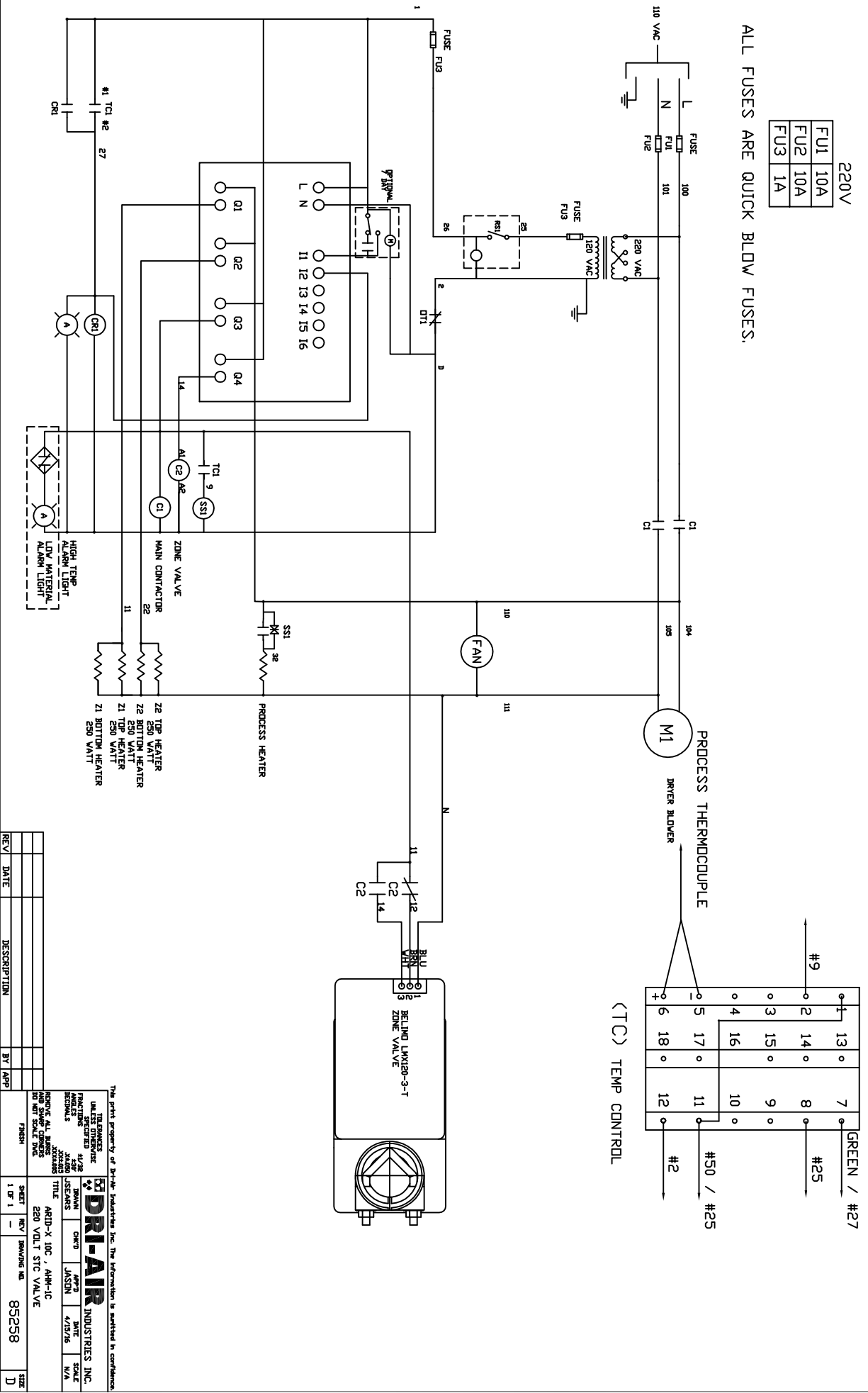


220V

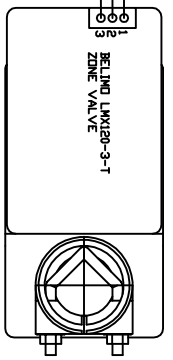
FU1	10A
FU2	10A
FU3	1A

ALL FUSES ARE QUICK BLOW FUSES.



(TC) TEMP CONTROL

#9	13 °	7	GREEN / #27
2	14 °	8	#25
3	15 °	9	
4	16 °	10	
5	17 °	11	#50 / #25
6	18 °	12	#2



REV	DATE	DESCRIPTION	BY	APP

The patent property of Dri-Air Industries, Inc. The information is provided in confidence.

DRI-AIR INDUSTRIES, INC.

FRANCHISE OFFICER: JAMES J. JANSSEN
 REGIONAL SALES MANAGER: JAMES J. JANSSEN
 GENERAL SALES MANAGER: JAMES J. JANSSEN
 TITLE: SALES MANAGER
 ADDRESS: 1000 W. 10th St., Suite 100, Olathe, MO 64040
 PHONE: (816) 645-1100
 FAX: (816) 645-1101
 E-MAIL: sales@dri-air.com

SHEET 1 OF 1
 REV / REVISION NO. 85258
 DATE 4/13/76
 DRAWN BY JANSSEN
 CHECKED BY JANSSEN
 DATE 4/13/76
 SCALE N/A